



## **Distribution Boxes BS 63\*/\*/17\*\*\*\***

### **(Intrinsically Safe)**

#### **Types of Explosion Protection:**

 I M1 EEx ia I  
 I M2 EEx ia/ib I

#### **Degrees of Enclosure Protection:**

IP 67 or  $\geq$  IP 54

#### **EC-Type Examination**

**Certificate:** IBExU 02 ATEX 1106



#### **Use**

The distribution boxes of type BS 63\*/\*/17\*\*\*\*, together with cable entries and terminals, serve for the connection of conductors of cables and leads of circuits with type of explosion protection “intrinsically safe”.

After inserting or attaching additional components they can be used as control and signal equipment – in which case further certified auxiliary components like light emitting diodes may be installed as well.

#### **Installation**

The equipment of type BS 63\*/\*/17\*\*\*\* may be installed in any position by screwing the lateral butt straps onto a stable even surface.

All unused enclosure openings have to be closed by means of appropriate plugs or flange plates.

#### **Data**

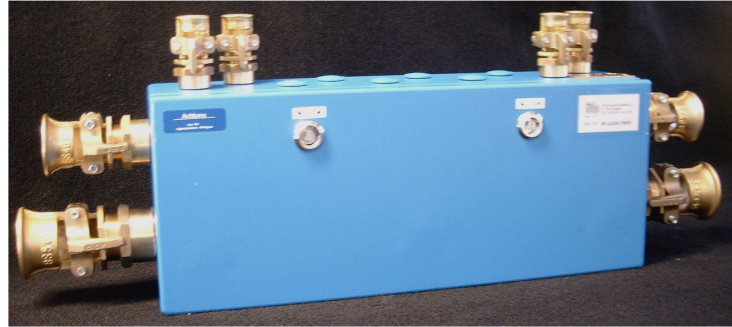
Voltage: 45 V DC / 32 V DC

Ambient Temperature: -20°C to + 40°C

### Examples of EEx i-Distribution Boxes

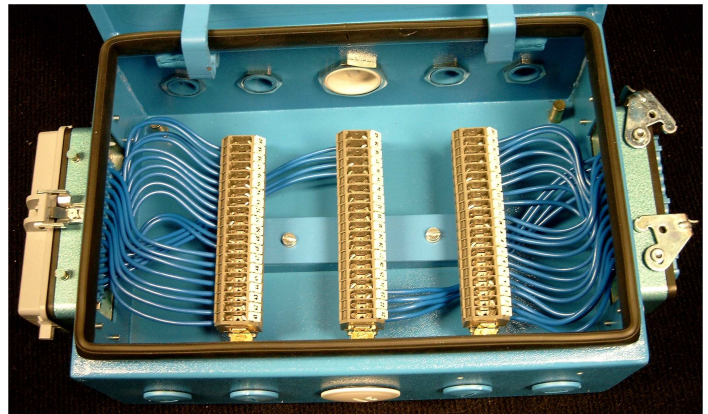
#### **Distribution Box BS 632/D/170029**

- Dimensions 500 x 200 x 120 mm
- Lid with hinges – optionally, fitting left/right to long sides
- Door locking with casement fasteners
- 4 butt straps
- 2 bars with 70 MTK-P/P BU-terminals each
- Continuously numbered from 1 to 70
- Inbuilt parts fitted on mounting plate
- Holes:
  - Long sides 10 holes with Pg 16 top and 6 x Pg 21 bottom,
  - at the side left and right 1 hole Pg 36,
  - 1 x Pg 29
- Cable entries:
  - 2 x BS 5 (Pg 36)
  - 2 x BS 4 (Pg 29)
  - 4 x BS 2 (Pg 16)
- Remaining holes equipped with dummy plugs



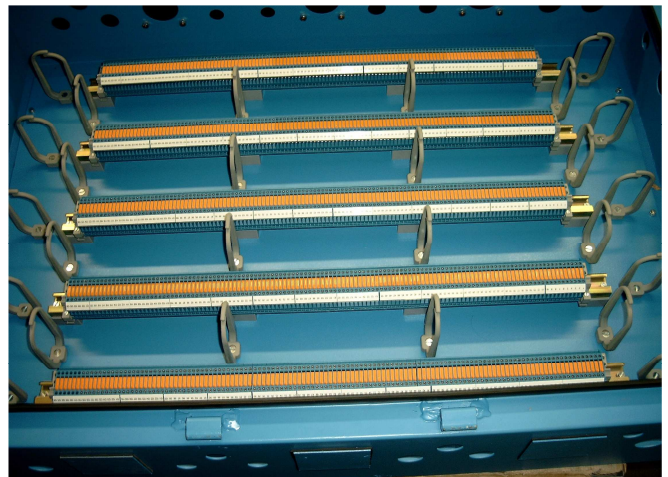
#### **Distribution Box BS 632/D/170021**

- Dimensions 300 x 200 x 120 mm
- Lid with casement fastener, sealing and internal hinges
- 4 butt straps
- 24-pole Wieland-plug-in-connector, (one side plug, other side socket)
- 60 Wieland-terminal blocks, continuously numbered from 1 – 60
- Fully wired
- 2 sides with 1 x PG 29- and 4 x PG 16-holes each, Equipped with dummy plugs

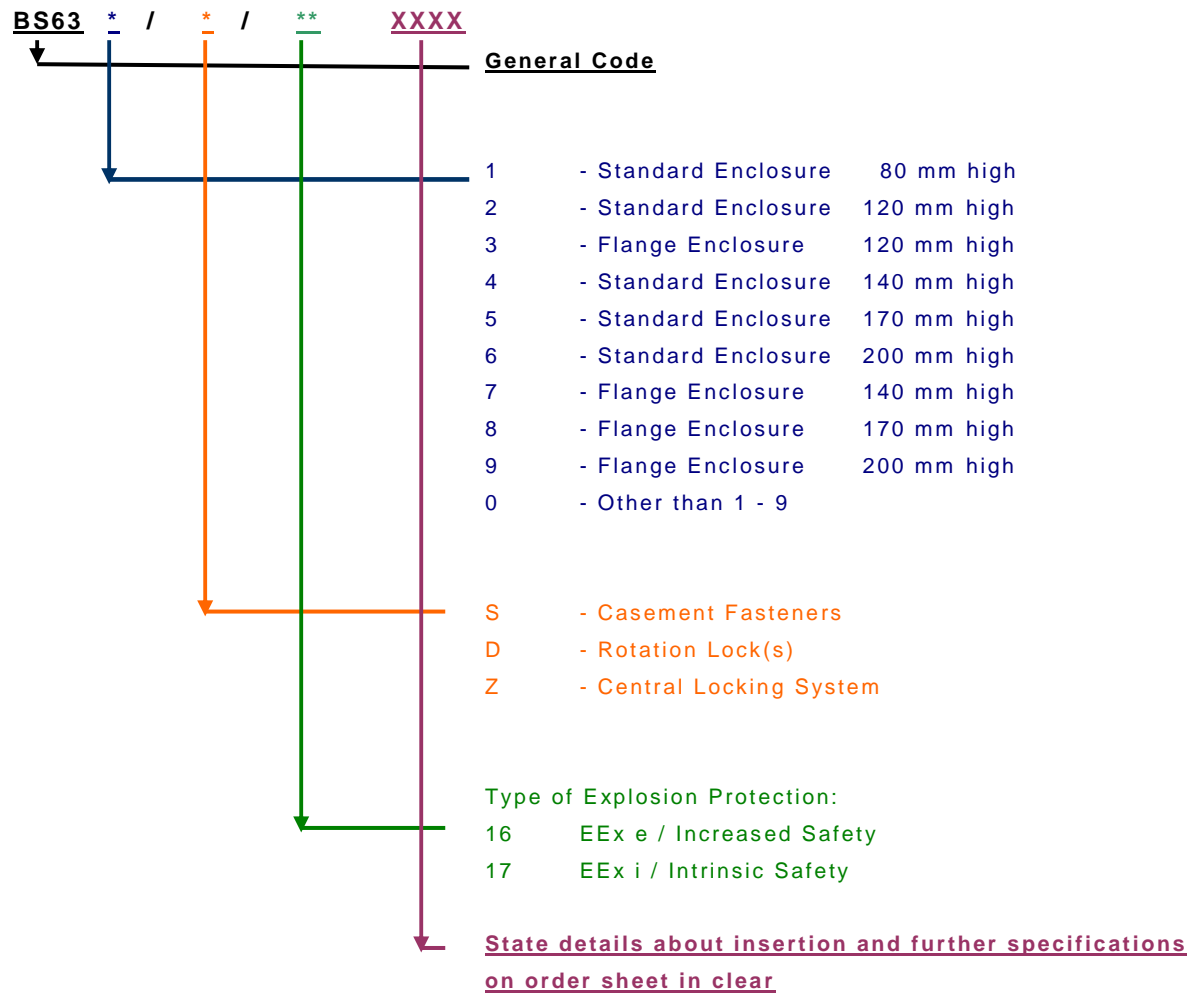


#### **Distribution Box BS 636/D/170057**

- 700 x 1000 x 200 mm
- Lid with hinges, optionally, fitting left/right to long sides,
- Door locking with casement fasteners,
- 4 butt straps,
- 5 bars with 126 MTK-P/P BU-terminals each continuously numbered from 1 to 126, with insertion aids
- Inbuilt parts fitted on mounting plate, Holes:
  - bottom 6 x Pg 21 and 7 x Pg 29
  - at the side right 6 x Pg 16, 6 x Pg 21 and 2 x 29 and 3 holes with blind flange

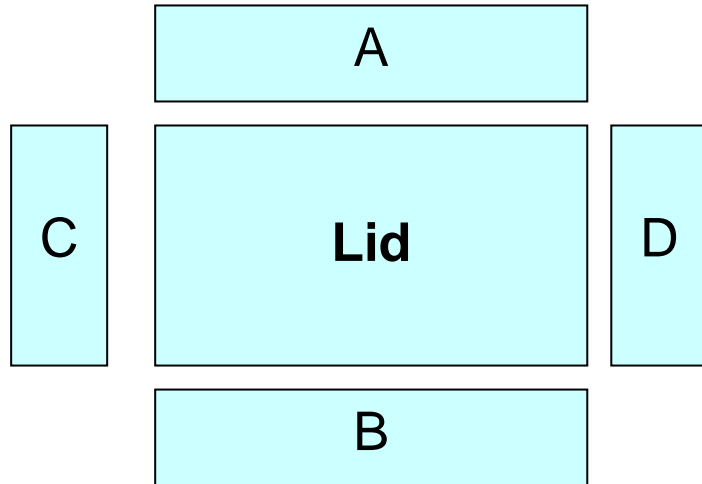


**Type Identification Key**



**Example of Equipping a Distribution Box (EEx i or EEx e)**

According to type identification key      BS 63 \* / \* / 1 \* \* \* \* \*



**Holes:**

|        |              |            |
|--------|--------------|------------|
| Side A | Number _____ | Size _____ |
| Side B | Number _____ | Size _____ |
| Side C | Number _____ | Size _____ |
| Side D | Number _____ | Size _____ |
| Lid    | Number _____ | Size _____ |

**Attachments (cable entries, dummy plugs, adapters, switches etc.):**

|        |              |            |
|--------|--------------|------------|
| Side A | Number _____ | Type _____ |
| Side B | Number _____ | Type _____ |
| Side C | Number _____ | Type _____ |
| Side D | Number _____ | Type _____ |
| Lid    | Number _____ | Type _____ |

Terminals      Number \_\_\_\_\_      Type \_\_\_\_\_

Mounting Bars       Mounting Plate       Cable Ducts

**Special Requests**

|                               |                                |
|-------------------------------|--------------------------------|
| Dimensions l x w x h _____ mm | Sheet Steel Thickness _____ mm |
| Electro-Galvanizing _____     | Colour/RAL _____               |
| Hinges _____                  | Lid Clamping _____             |

**Remarks**

-----  
 -----